



## Building Information Modelling "The New Cool of Construction"

### BREAKING NEWS

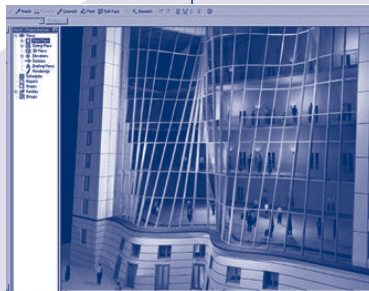
A renaissance is happening in the construction industry and Quantity Surveyors are in a good position to help facilitate greater design collaboration on projects, better buildings and certainty in price. These key findings are the outcome of an intensive exploration into the use of IT led by David Mitchell, Director of Mitchell Brandtman, who delivered a paper this month on Building Information Modelling at the Pacific Association of Quantity Surveyors Conference in Auckland, New Zealand. "Our own research and applied practices with IT have occurred over a 25 year period and we can now prove that information technology for measurement is the vehicle that will drive us all into the future", says David. Mitchell Brandtman is leading ways to use IT and leverage the idea of collaborative design. "And we can do this already", says David. "We have living cost planning that enables us to facilitate a shared understanding of the realities of costs amongst different parties on a construction project, from start to finish". David states, "Most professionals would agree that the segmented nature of the industry has always been a fundamental problem in the creation of cost blowouts and arguments". As a result, Mitchell Brandtman has invested a substantial amount of time in recent years to see how they can bring design parties together to achieve certainty in price ... and help diffuse dissenting points of view between architects, developers, builders and engineers." The idea of collaborative design through IT presents a great way forward and Mitchell Brandtman is currently achieving success – saving both time and money for clients with the use of systems like:

- **Building Information Modelling (BIM)** – The development and use of a computer software model that simulates the construction operation of a facility resulting in a Building Information Model
- **CostX** – A project costing system that incorporates automated quantification
- **Revit** – Purpose built building information modelling software that works the way YOU think to create naturally, design freely and deliver efficiently

### THE FUTURE THROUGH IT

Mitchell Brandtman is hoping to help the industry as a whole converge through IT and would like to see more and more industry partners jump on board and ride the IT wave. It's all

there with more to come. We need to get people aware and practiced with software. We already have the capability to unlock budgets. "The guys in our office, for example, have been using BIM for about 2 years now with some really cool results. The fact that we can build a model from drawings and then reverse brief our clients with a 3D model of their project is revolutionary". Clients can do a virtual walk through their building from the very early stages of design and it's at this early stage that Revit and CostX can eliminate scope creep and costly blowouts. "Clients now want more", says David "because they are starting to see the benefits of working with IT and Living Cost Planning, they are starting to understand the benefits of working with a collaborative design model". Historically, project partners have acted as separate operations on a construction project but now we can work alongside each other to pave the way for savings in time and money.



### BUY-IN IS STILL A CHALLENGE

IT tools are ready to be put into practice, however, a shift in the way we think about IT in the construction industry remains a hurdle. As an industry, we are still about 20 years behind other industries like petrochemicals and manufacturing who have embedded IT as a process tool. As Chair for the IT Task Force group of the Queensland Construction Industry Forum, David earlier this year began to seek feedback from professionals from different sectors of the industry to reveal their use of IT and to suggest how usage can be improved. "What we found, was a common belief that the industry as a whole lacked any clear direction in the use of IT," says David. "So we have identified a need for more pilot projects and education programs to be developed that will support IT awareness. Getting people informed and practiced is critical to create trust in software that is already available. Collaboration within the industry is critical for IT to be developed well for our industry", says David who urges for more cross industry partnerships to be formed to properly explore what IT can do. "In fact, I believe we should all stop focusing on the money and start focusing on the future. The frontiers of possibility for the construction industry are endless." From a Quantity Surveyor's perspective, David says, "this stuff is just fantastic. Through Revit and CostX, we create certainty that our quantities are correct and by building 3D models our clients can visualise the savings on their project. So I can assure any business, you may not see immediate profits if you implement BIM in your offices today, but they will eventuate quickly".

The material in this bulletin is for general comment only. For further information on research findings, contact **David Mitchell** on **07 3327 5000**. If you would prefer to receive our bulletin via email, or do not wish to receive our information in future, please email **Lisa Veneran**, Marketing Manager at **lveneran@mitbrand.com**



**MitchellBrandtman**

Quantity Surveyors & Construction Cost Managers

Email [bne@mitbrand.com](mailto:bne@mitbrand.com)

[www.mitbrand.com](http://www.mitbrand.com)

# costsolutions



hot **people**...hot **jobs**...hot **company**

## MBuzzzzzzzzzz



These handsome devils have recently been appointed Associates of Mitchell Brandtman



**Stuart Wearn** joined the MB crew 4 years ago. Previous to arriving on our shores, Stuart performed the role of Quantity Surveyor, Employers Agent and Projects Co-ordinator for various main stream clients in England. He is involved on key Brisbane projects including The Barracks on Petrie Terrace, 110 Mary St and SW1.

Some interesting facts...

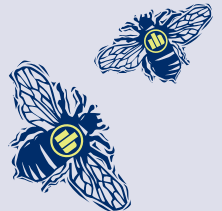
**Name** Stuart Wearn  
**Age** 35  
**Married** To Caroline and has one little girl Callea (2½) and another girl on the way  
**Favourite Sport** Soccer/Liverpool (he wouldn't be English if it wasn't)



**Jody Nash** started at Mitchell Brandtman 3 years ago and comes to us all the way from South Africa. Before joining MB Jody was the Operations Manager for MEI. Jody is currently involved on key projects including M on Mary, Robina Projects Developments and Tribune, South Bank.

Some interesting facts.....

**Name** Jody Nash  
**Age** 42  
**Married** To Michelle and has two children, Kelsey (10) and Kegan (12)  
**Favourite Sport** Rugby Union (his favourite team depends on who is winning)



tax time!!

Don't let  
your property  
investment  
dollars go  
down the toilet



Since 1970, Mitchell Brandtman has been working with property investors in minimising their taxation exposure and maximising their property and investment returns. Ask us how.



**Mitchell Brandtman**

Quantity Surveyors & Construction Cost Managers

[www.mitbrand.com](http://www.mitbrand.com)

**1800 808 289**

a progressive hands on team giving your projects direction ● ● ● ●